

## Spring Smiles!

- Retirees of the Year
- Scholarship Winners
- Spring Social

## President's Message

DEAR MURA MEMBERS,

In my message in January, I said that this year, "You will be bombarded with political advertisements and rancor. Avoid being swept up in that cacophony. I encourage you to be engaged and informed about local, state and national issues, but also to focus on the important matters in your life: your health, your family, your friends, your faith, and your overall enjoyment of life. You will be better and happier for it." That message bears repeating, and I urge you to also consider the mantra that Kim Dude-Lammy and Childrens' Grove seek to impress on children: **Be kind.**



**Kenneth Dean**

Kindness costs nothing, and bestowing it provides incredible returns to both the giver and the receiver. You'll find good examples of this in the Retirees of the Year on page 2. Jo Turner and Rick Wise are models for us all in their dedication to our community.

At the MURA Board meeting on April 17, we discussed a variety of items, including what to do about the rising costs of food and drink at MURA events, particularly for the breakfasts. You will be receiving a member survey in the next several weeks that will seek your input on programming, food options and costs, and several other issues of importance to MURA members. This will be the third member survey since the first one in 2018. Given the rapidly changing environment of the past six years, it is important that we recognize possibly changing views about what MURA can or should be doing for you. One thing the Board approved was making the Zoom recordings available to members at no cost for 45 days after the event, making it easier for those who miss an educational breakfast program for whatever reason- to see that program within a reasonable time thereafter.

I am pleased to report that the membership at the annual meeting in March unanimously voted to make the proposed changes to our Constitution and Bylaws that you saw in the last newsletter. Additionally, four new officers were unanimously approved to begin July 1. They, along with Jim Scott, who will move from president-elect to president for 2024-25, are shown on page 10.

Please remember that MURA is a member of AROHE, and every member has access to their periodic newsletters. The

most current one is available at [https://www.arohe.org/resources/EmailTemplates/AROHE%20Matters%202024-03/index\\_preview.html](https://www.arohe.org/resources/EmailTemplates/AROHE%20Matters%202024-03/index_preview.html). In addition, you will find information on page 11 about the opportunities the Association of Retirement Organizations in Higher Education (AROHE) Travel Institute offers to MURA members through Road Scholar.

Your Board works diligently on your behalf, meeting quarterly, to ensure that we are meeting the needs and expectations of YOU, our fellow MURA members. The work of MURA could not be accomplished without those of you who serve on our various committees.

Finally, my deep thanks to all of you who volunteer and donate your time and talents to Missouri, Columbia, our University, nonprofit organizations, and especially MURA. Thank you! Thank you! Thank you!

Best wishes,

Kenneth Dean  
MURA President  
[deank@missouri.edu](mailto:deank@missouri.edu)  
573-268-7435

## In This Issue

Phishing Scams.....	2
Retirees of the Year.....	2
MURA Cash Flows.....	3
Retirees as Collectors .....	4
Charles St. Clair.....	4
Marvin Tofle.....	4
Ann Korschgen.....	5
Marty Townsend.....	5
Judy Stallman.....	5
Kee Groshong.....	6
Breakfast Programs.....	6
May Breakfast.....	6
June Breakfast .....	6
United Way Contributions .....	7
United Way Award .....	7
Scholarship Program .....	8
Scholarship Winners.....	9
Election Results.....	10
Spring Social .....	10
Good News.....	11
Mitchel Lecture Series ...	11
AROHE Travel Institute .....	11
MU Parking Policies .....	11
Upcoming Events .....	12

## Mark Your Calendar!

**Check out information on the May and June MURA breakfast programs on page 6!**



## Phishing Scams Are Proliferating!

Ruth Tofle, MURA Co-historian

**We are not immune** to the internet frauds called “phishing scams.” They are tricky emails, texts, and phone calls, and we may not always be vigilant when rushing through emails on auto-pilot. Emails with suspicious return addresses and ambiguous messages with attachments find their way to our computers.

Fortunately, a University of Missouri System website at <https://www.umsystem.edu/ums/is/infosec/phishing> provides answers to these questions:

- What are phishing scams?
- How do phishing scams work?
- Why do cyber-criminals want my account details?
- Does the University filter email?
- How are junk mail and phishing messages identified?
- Would a legitimate email be filtered out?
- What should I do if I did not receive an email I was expecting?
- Can phishing emails still reach my official University account?

Besides these answers, the System website offers guidance to avoid and respond when we are targeted. Topics include the following:

- Follow These Best Practices to Prevent Getting Snagged!
- If You Think You Have Already Been Phished . . .
- How to Report Phishing in Outlook

Phishing schemes were the crime most frequently reported to the FBI’s Internet Crime Complaint Center in 2023—34% of all complaints, so it’s important to avail ourselves of resources that help us to recognize and avoid these scams.



## Retirees of the Year

**Begun in 1990**, the Chancellor’s Retiree of the Year Awards focus on the accomplishments of former employees after their retirement. These accomplishments involve volunteer service to the University, civic and welfare services, career and professional activities or other noteworthy achievements.

Accomplishments prior to retirement are **not** considered in the selection process. Two annual awards are given: one to a retired faculty member and one to a retired staff member. Each award includes a plaque and a \$1,500 check. Previous nominees not selected are kept in the pool for two more years.

- Nominees must have retired from the University of Missouri before January 1, 2019.
- Nominees must have contributed volunteer service to their communities or to university, professional, or civic organizations following their retirement.
- Retiree Advisory Committee members are not eligible.

This year’s awardees, L. Jo Turner and Rick Wise, were announced at the MURA Spring Social.

### L. Jo Turner

#### Faculty Retiree of the Year

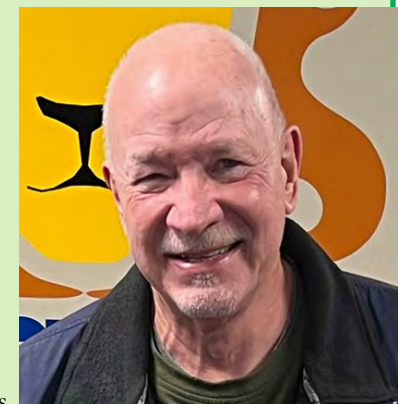
Jo is a past president of MURA and remains active on the Board. She consults for the National 4-H Council, Missouri 4-H Foundation, and MU Extension Advancement. Jo is active with the Assistance League of Mid-Missouri where she is helping to create an online store. She served on the MU Extension and Engagement Cabinet on Philanthropy and the Human Environmental Sciences Dean’s Strategic Leadership Council. She is an officer of the historic Fairview Cemetery Association and served as liturgist and pianist at the VA Hospital.



### Rick Wise

#### Staff Retiree of the Year

Rick has been active in the City of Refuge, providing such assistance to refugees as tutoring in English. He has served Rainbow House in a variety of capacities, including serving as Board President. Rick has served as volunteer fundraiser for Woodhaven, the American Heart Association, the Arthritis Foundation, and Arrow Rock Lyceum Theater. He is currently “re-employed” as Poppy to his three perfect, beautiful grandchildren.



<b>MURA Statement of Cash Flows</b>	<b>Actual FY as of 3/31/24</b>	<b>Actual FY Ended 6/30/23</b>	<b>% of Prior Fiscal Year</b>
<b>Activities Supported by Member Dues &amp; Investment Income</b>			
<b>Receipts</b>			
Dues-annual	\$212.50	\$550.00	38.64%
Dues-lifetime	1,362.50	3,450.00	39.49%
Donation to Scholarship Fund	20.00	170.00	11.76%
Sponsorship from Tiger Place for Business Meeting	1,000.00	1,000.00	100.00%
Budgetary Support from the University	8,000.00	0.00	0.00%
Investment income - Vanguard	2,905.09	3,380.76	85.93%
<b>Total Operating Receipts</b>	<b>13,500.09</b>	<b>\$8,550.76</b>	
<b>Disbursements</b>			
Business meeting	332.57	701.50	47.41%
Orientation meeting, Board meeting deposit	(100.00)	540.39	-18.51%
End of Life Seminar	620.90	0.00	0.00%
AROHE Dues	0.00	120.00	0.00%
Flagship Council	0.00	250.00	0.00%
Copies, Printing services	780.22	1,928.45	0.00%
Post Office Box rent and postage	150.00	146.00	102.74%
Software (WinHost, Jotform, Adobe)	432.39	647.28	66.80%
State of Missouri - Secretary of State filing fee	10.50	10.50	100.00%
Payment to University for Kitty Dickerson Scholarship	0.00	170.00	0.00%
PayPal fees assessed against dues payments	31.22	70.09	44.54%
<b>Total Operating Disbursements</b>	<b>2,257.80</b>	<b>4,584.21</b>	
<b>Excess of Operating Receipts over Disbursements</b>	<b>11,242.29</b>	<b>3,966.55</b>	<b>283.43%</b>
<b>Self-Supporting Social Activities</b>			
<b>Holiday Luncheon</b>			
Receipts - Members	2,525.00	2,175.00	
Receipts - Sponsorship from Central Trust	2,155.47	1,114.95	
Disbursements - PayPal	84.30	66.45	
Disbursements - Honorarium Pianist, supplies	148.77	91.76	
Disbursements - Holiday Inn Executive Center	4,447.40	3,131.74	
<b>Net Receipts (Disbursements)</b>	<b>0.00</b>	<b>0.00</b>	<b>0.00%</b>
<b>Shakespeare's Fundraiser</b>			
Receipts	218.52	379.82	
Disbursements-University for Kitty Dickerson Scholarship	218.52	379.82	
<b>Net Receipts (Disbursements)</b>	<b>0.00</b>	<b>0.00</b>	<b>0.00%</b>
<b>Spring Event</b>			
Receipts	0.00	840.00	
Disbursements - PayPal	0.00	44.73	
Disbursements-University for Kitty Dickerson Scholarship	0.00	795.27	
<b>Net Receipts (Disbursements)</b>	<b>0.00</b>	<b>0.00</b>	<b>0.00%</b>
<b>Breakfasts</b>			
Receipts - Members	7,406.00	9,015.00	
Receipts - Sponsorship from Central Trust	1,844.53	1,885.05	
Disbursements - PayPal	313.81	393.64	
Disbursements - CCMO, City of Columbia, A-1	9,174.79	11,307.90	
<b>Net Receipts (Disbursements)</b>	<b>(238.07)</b>	<b>(801.49)</b>	<b>29.70%</b>
<b>Other Receipts (Disbursements)</b>			
Transfer to Investment Account	0.00	(3,450.00)	
Transfer from Investment Account	0.00	(3,450.00)	
<b>Net Increase (Decrease) in Cash During Period</b>	<b>11,004.22</b>	<b>(284.94)</b>	
<b>Cash Balance, Beginning of Period</b>	<b>5,263.63</b>	<b>5,548.57</b>	
<b>Cash Balance, End of Period</b>	<b>\$16,267.85</b>	<b>\$5,263.63</b>	
<b>Investment Assets - Lifetime Members Reserve Investment Account (see note)</b>	<b>\$109,768.84</b>	<b>\$105,557.22</b>	

Note: This asset pool was established from lifetime membership dues. The income from these investments provides services for lifetime members as they no longer pay dues. Currently, these assets are invested in the Vanguard Wellesley Income Fund.



# Retirees As Collectors

Ruth Tofle, MURA Co-historian

Why are we motivated to be collectors? It can be a form of self-expression, aesthetic appreciation, recognizing the speculated value of items, or just a hobby that got out of control. Collectors tell us of the thrill in researching, acquiring, cataloging, dis-

playing, admiring, and storytelling. Collections may have started at an early age or started because of travel to new places. In addition to learning *what* retirees are collecting, learning *why* we are collectors captures our attention.

## Early Reader and Fond Memories Thanks to Pogo Books

**Charles St. Clair** explains that, “Sometimes, my dad would come home from his day’s travels with a comic book instead of a bag of candy. If I still had some of those comics, I’d be able to retire to the south of France, but who knew that a first edition Batman would be worth \$1 million? However, he did bring home Pogo books and those were, and are, more valuable to me than all the Batmans and Supermans and Spidermans because each evening, he’d sit down and read them to me. After days of hearing the same stories over and over, I’d start reading along with him. By the time I got to first grade, I was way beyond Dick and Jane. I don’t have that first Pogo book, but I do have some of the early ones, and I add to my collection every now and then when something catches my eye on eBay.”



Photo by Suzanne St. Clair



Photo by Hank Schneider

## Sand Reflects Passages of Time and Place as We Are Works in Progress

When **Marvin Tofle** returned from a trip to Cancun, he was surprised by the sand in his suitcase. Instead of pitching it out, he saved it in a jar, the beginning of a collection of over 200 specimens collected on world travels. Each canister has identifying notes and stories. A jar from 2001 is the result of a “mixing of the sands” wedding ceremony with his bride-to-be Ruth. Marvin collected his sand from the banks of the Mississippi River at St. Louis where he was born and Ruth scooped up her sand from her hometown of Washington, Missouri on the banks of the Missouri River. Ruth’s brother, an environmental engineer, officiated and captured the greater meaning of the sand as the fluvial grains were mixed. “Sand reflects the landforms, geology, and therefore history of a place. We reflect on our own origins, to honor our parents and to honor their parents. Sand reflects this passage of time and is a work in progress. We are a work in progress and reflect a time and place along our journey. Envisioning the joining of rivers and mixing of sands, we see it as a coming together, a mixing of lives. A synergy occurs as you are here to create new meaning to us.”

## Collectors . . .

### Passions of Culture, Beauty, and Politics

**Ann Korschgen's** collections have always reflected her passions—culture, politics, and beauty. “I began my first collection with pen pals from around the world and by age 10, I had a pen pal from every continent except Antarctica. As I grew older, I became interested in politics and world events. Thus, I began collecting autographs and acquired them from Presidents Truman, Nixon, Clinton, and Kennedy; and from many others, including Walt Disney, Grandma Moses, Wernher Von Braun, Studs Terkel, Gaylord Nelson, Hubert Humphrey, and Nelson Rockefeller. At age 9, I received a rock collecting book from my grandfather, and that got me started with rocks! As you can see from the photo, I continue to collect rocks from around the world, and every day I enjoy their beauty and the memories they evoke. Finally, I started collecting arrowheads when we moved to Columbia in 2001 because the land upon which we live was once populated by First People who left behind amazing artifacts.”



Photo by Carl Korschgen

### The Appeal of Paperweights

**Maggie Walter** tells her story on collecting paperweights since childhood. “There is only one paperweight in my house that is used for its intended purpose. The other 50 or so still hold a display place in an antique oak Larkin drop-down desk because of their beauty and more so because of their sentimental connection to my father’s dear friend Joe Zimmerman. An elementary school class-trip to Zimmerman Art Glass in Corydon, IN, was my first introduction to magnificent paperweights (see <https://artzglass.com/pages/our-history>). Kiddos were allowed, with much precaution, to take a quick turn at blowing a bit of glass. I was in love and have continued to collect these beauties ever since. Several in my collection are from the Zimmerman factory; others have unique features like the clear glass creation with the glass body of a locust embedded inside. Some are one of a kind from artists met at expositions, and there’s a special one from a relative that contains ashes from Mt. St. Helens. A few



require backlighting to see the special designs hidden inside the dark exteriors. And they all provide a great attraction for visitors.”



Photos by Evan Prost

### A Basket Case

**Judy Stallman** bought her first basket for shopping while in the Peace Corps and became intrigued with how it was made. “Back in the US, I took a basket-making course and thought I would make baskets and not buy more. I made baskets as gifts to family and friends. But learning about baskets made me appreciate them, and my collection grew. I have not made a basket in many years but occasionally repair one. My most rewarding repair was of a German-style, willow work/laundry basket made by my great-grandfather for my mother’s parents when they married. My father sat all afternoon watching me repair the basket. I put it in the garage to dry, and I saw him going out several times to look at my work. I have baskets from all continents except Antarctica. My baskets range from the utilitarian to highly decorative to ceremonial. Many of the utilitarian are also decorated. Among the ceremonial, I have a Navajo wedding basket, an Apache wedding burden basket and four masks. Baskets of all sizes have many uses in my house, and the largest baskets are coffee and end tables. I have one basket as small as the nail on my little finger, and it has a lid.”



Photos by Maggie Walter



## Collectors . . .

### The Thrill Of Buying Antique Tractors & Getting Them Running

**Kee Groshong** was raised on a farm – but always enjoyed being in the shop working on farm machinery more than farming. When he had space to collect tractors in 1978, he bought a 1926 John Deere Model D tractor. As time progressed, he added a 1910 Universal Tractor – which is among the earliest built. He concentrates on tractors made by John Deere, Rumely and the Universal tractor, which was selected as the “Centennial Tractor” as featured in the Nov.-Dec. 2010 issue of the *Antique Power magazine*. Why does he collect antique tractors? “It’s the thrill of buying a unique tractor and getting it running . . . Some are in really rough shape. I also enjoy the friendships I have developed over the years at shows, and I got my son hooked on the hobby as he has been going with me since he was young. He currently serves on the National Board of Rumely Products Collectors.” Kee’s tractors are stored locally and in Boonville, MO, and Minnesota. How many tractors does Kee have? In his words, “I never really counted them up because I didn’t want to lie to my wife.”



Photo by LG Patterson

## Upcoming Breakfast Programs

### May Breakfast

**Greg Bier, Director, and Kelly Mattas, Griggs Innovation Nexus**

**The University of Missouri** offers programs, coaching, and resources to help students turn ideas for products and services into business realities. Join us from 8-9:30 am on May 7 at the Country Club of Missouri for an interesting presentation from the Griggs Innovation Nexus. Over the last five years, their innovative approach to education, hands-on experiences, and mentorship has provided a culture that equips Mizzou students with the skills to navigate and excel in the dynamic entrepreneurial landscape of tomorrow.



Dr. Greg Bier is the Executive Director of Entrepreneurship Programs at MU. In that role he leads Mizzou’s Entrepreneur Quest program, the Entrepreneurship Bootcamp for Veterans, and other programs hosted by the Griggs Innovators Nexus. Greg is a US Army veteran and completed his military service with an assignment with the Army Special Operations Command in 2004. He has taught both business and engineering students at the undergraduate and graduate levels. He currently serves on an advisory board for the Small Business Administration. Greg is the owner of the Eagle Cliff Company LLC, CBA Adventures LLC, and co-owns Raymond-Bier Holdings, LLC and Influence and Company, LLC.

Kelly Mattas is the MU Entrepreneurship Program Senior Manager. She provides support and mentorship for the student and veteran entrepreneurship programs in the Griggs Innovators Nexus

portfolio. She is a graduate of Missouri State University and pursuing her MBA at UMKC. As a wife, mother, entrepreneur and volunteer, who understands the value of encouraging others and providing opportunities for growth.

### June Breakfast

**Carol Davit, Executive Director, Missouri Prairie Foundation**



**Missouri was once** covered with more than 15 million acres of tallgrass prairie, and prairie soils made the state into the agricultural powerhouse that it is today. Today, our state’s prairie legacy is reduced to fewer than 45,000 scattered, unplowed acres, but these old-growth remnants are biodiversity reservoirs and hold keys to sustainable future land use to benefit all Missourians. Join us from 8-9:30 am on June 5 at the Country Club of Missouri for a presentation on Missouri’s prairies by Carol Davit.

An MU alumna, Carol Davit is the executive director of the Missouri Prairie Foundation, a 58-year-old land trust that includes Grow Native!, its 24-year-old native plant marketing and education program. Carol has worked for 26 years in conservation and environmental communications, development, administration, and leadership for private and nonprofit conservation groups, and also for municipal and state governments. Editor of the *Missouri Prairie Journal* since 1997, Carol writes articles on native gardening, has edited field guides, and enjoys speaking to groups about native gardening, prairie conservation, and related topics. She is also the chair of the Missouri Invasive Plant Council. Carol lives in Jefferson City with her husband and son.



Heart of Missouri United Way

## Retirees Contribute to Successful United Way Campaign

Dee Montgomery, MURA Representative, MU United Way Committee

**The 2023 UM Heart of Missouri United Way Campaign** was very successful. The total donated as of February 15 (including retiree donations) was **\$482,309**, well above the MU Committee's stated goal of \$460,000. MU retirees donated an incredible **\$187,408**, well above last year's total of \$141,301. This impressive total for retirees represents **38.8%** of the MU total.

The amazing generosity of retirees will help the Heart of Missouri United Way continue to reduce barriers experienced by those in need in our community with regard to their education, health, and financial stability. Last year's 45 grants to 29 nonprofit agencies were associated with impactful outcomes: Of those served and assessed in United Way-funded education projects, **100%** of children entered school ready to succeed and **89%** graduated from high school on time. In health projects, **90%** of participants increased healthy behaviors and **93%** avoided or reduced risky behavior. In projects targeting financial stability, **90%** of participants gained employment. Families and individuals in our community face many challenges and barriers. No other nonprofit organization has the reach to address the pressing needs of so many in our community as Heart of Missouri United Way.

I am so impressed with, and thankful for, the generosity of members of MURA with their continuing efforts to improve the lives of so many in our community through their contributions to the Heart of Missouri United Way. Way to go, MURA members!



## MURA Member Dee Montgomery Receives Surprise Award from Heart of Missouri United Way

Kenneth Dean, MURA President

**Dee Montgomery**, a recent MURA member, has done a fantastic job this past year. As our representative to the United Way, she was recognized by the Campaign Chair Achievement Award at the MURA Spring Social on April 8. The United Way Campaign Chair Achievement Award is given at the discretion of the Campaign Chair to a person, group, or organization who has exceeded reasonable expectations in their efforts to raise funds for United Way. Dee was selected by 2023 Campaign Chair Jim Owen (JD '81), the now-retired CEO of Missouri Employers Mutual. Congratulations, Dee! For those of you who do not know, Dee is a retiree from Missouri S&T who moved to Columbia with her husband, Robert, a few years ago and joined MURA.



Clockwise from left: Andrew Grabeau presents Dee Montgomery with United Way award; MURA President Kenneth Dean, Dee Montgomery, and Andrew Grabeau at the award presentation; classroom benefiting from United Way contributions.





# A History of the MURA Kitty Dickerson Scholarship

Ruth Tofle, MURA Co-historian

In MURA's early years, **George C. Brooks**, 1992 Staff Retiree of the Year, provided the spark to establish MURA scholarships. In his words:

“Our association was not formed to simply negotiate increased benefits for retirees, rather to be a cooperative and vibrant part of the University wherever possible. In this regard, a proposal has been made for the establishment of a \$1,000 scholarship by MURA” (*MURA News*, 1994).

That vision remained dormant until it was ignited during MURA's 25<sup>th</sup> anniversary when **Tom Henderson** and **Kitty Dickerson** served as MURA Board members and presidents. An ad hoc committee chaired by **Earl Wilson** worked to establish guidelines, and in January 2016, the MURA Board unanimously approved a scholarship program to benefit dependents of MU and UM staff members. The endowment would “contribute to the future of a set of scholars and provide needed support to MU” (*MURA News*, February 2016).

Kitty Dickerson is credited with spear-heading ambitious financial development. Her multi-prong fundraising approach included appointing two influential MURA past presidents, **Kee Groshong** and **Gary Smith**, to serve as the scholarship committee co-chairs, write letters, and talk to donors in the broader community. Kitty initiated a Mizzou GiveDirect page, payroll deduction, talking points, and explained the details of charitable IRA rollover as a financial and philanthropic plan (*MURA News*, September 2016).

Due to the rapid decline of Kitty's health, **Marty Townsend** stepped in as acting president in fall 2016 and announced two \$500 scholarships in the November 2016 *MURA News*. Marty's next newsletter carried the news of Dickerson's passing with memories of her humble background and her life's international, campus, and civic impact. The newsletter also announced:

“On Jan. 11, the MURA Board of Directors overwhelmingly voted to rename the organization's scholarship fund in Dickerson's honor. Henceforward, the Kitty Dickerson MURA Scholarship will remember her dedication to a special constituency that was dear to her heart” (*MURA News*, January 2017).

Following Kee Groshong and Gary Smith's service as scholarship committee co-chairs, the committee was chaired by **Tim Parrshall** (2020-2021), **Tom Henderson** (2021-2022), and **Ted Tarkow** (2022-present). The number of student scholarships

awarded annually has increased from two to six, and the amount of support has increased from \$500 to \$1,500 for each student.

Strategies for fundraising have also expanded to hosting a concert with son Deke Dickerson, volunteering at the Missouri Store, and enjoying a percent of the revenue at Shakespeare's Pizza. Please join MURA friends and colleagues May 1, 2024, as we continue to support our students—and our staff. Either clip the flyer below or take a picture of it with your phone.

## Shakespeare's Pizza

☞ Downtown ~ West ~ South ☞

**Fundraiser for  
MU Retirees Association**  
\*Wednesday, May 1, 2024\*

**Friends of MU Retirees Association will make purchases (Dine in, Carry Out, or Delivery) at Shakespeare's Pizza then 15% of all those sales will be donated to MU Retirees Association.**

- Present this flyer, tell us when you call in an order, or show us a copy on your phone when ordering. All day, anytime.
- We'll save a copy of your receipt and add them all up at the end of the night. 15% will go back to MU Retirees Association!
- Everything on the menu counts: pizza, salad, t-shirt, gift card, or drink.
- Take home some frozen pizzas for later. The more you buy, the more MU Retirees Association makes!

**Dine-In\* To Go**

**(573) 449-2454 (Downtown)**  
**(573) 447-1202 (West)**  
**(573) 447-7435 (South)**

225 South Ninth Street, Columbia, MO 65201  
3304 Broadway Business Park Court, Columbia, MO 65203  
3911 Peachtree Drive, Columbia, MO 65203

This offer CANNOT be combined with ANY coupons or discounts. We kindly request that these flyers be handed out at least 623 feet from our Front Door.





## 2024-25 Scholarships—\$1,500 Each

**Daniella Calle**  
**Biochemistry**



**Mother**  
**Sandra Zapata**  
**MU Extension**  
**Nutrition Associate**

**Brooke Anich**  
**Environmental Sciences**



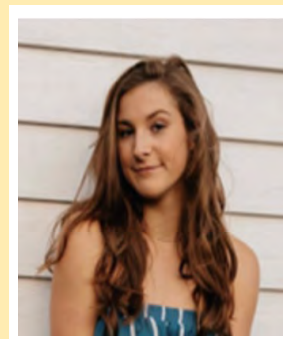
**Father**  
**Gregory Anich**  
**Procurement**  
**Operations Asset**  
**Management**  
**Specialist**

**Sam Kim**  
**Health Sciences**



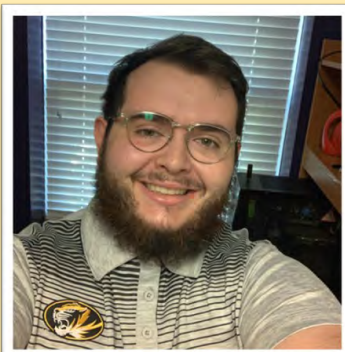
**Father**  
**Wonseok Kim**  
**Plant Science and**  
**Technology**  
**Research Specialist**

**Josie Bolte**  
**Health Sciences**



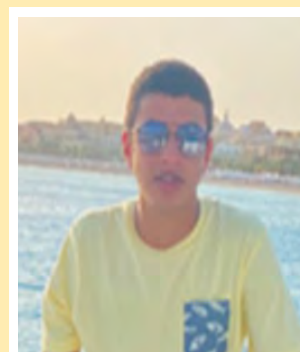
**Mother**  
**Cheryl Bolte**  
**Research Compliance**  
**Specialist**

**Elliot Gilbreth**  
**Graphic Design**



**Parents**  
**Tim Gilbreth**  
**MURR Nuclear**  
**Manufacturing**  
**Technician and**  
**Teressa Gilbreth**  
**The Connector**  
**Strategic**  
**Communications**

**Mohamed Lehmidi**  
**Computer Sciences**



**Mothe**  
**Naziha Elhassan**  
**Family Medicine**  
**Physician's**  
**Assistant, Specialty**  
**Care**

# Congratulations to MURA's New Officers!

In the election of officers at the annual business meeting of the MURA membership, new officers shown here were unanimously approved. In addition, Jim Scott will move from president-elect to president for 2024-25. From left: Jim Scott, president; Mary Leuci, president-elect; Brian Sanders, treasurer; Donna Otto, Board member at large—faculty; Janie Hamon, Board member at large—staff..



## Spring Social Smiles



Clockwise from above: Jo Turner and spouse Dale Brigham; MURA President Ken Dean, Faculty Retiree of the Year Jo Turner, and Marsha Fischer; Dale Brigham and Dickerson scholarship winner Sam Kim; Dickerson scholarship winner Brooke Anich; check; Staff Retiree of the Year Rick Wise, Ken Dean, and Marsha Fischer.





# Good News About Mizzou and Mizzou Students

Perhaps the greatest measure of student accomplishment is graduating and finding a successful career outcome afterward. In 2023, Mizzou students broke the University's all-time retention and graduation rate records, and, according to a new career outcomes survey, *more than 95% of recent Mizzou graduates* found employment, began graduate studies or entered volunteer service within six months of graduation. These successful outcomes are part of the reason that Mizzou was ranked by *US News & World Report* as the seventh Best Value among flagship universities. *Time Magazine* also ranked Mizzou 13<sup>th</sup> among all flagships for educating future leaders.

## Mitchel Lecture Series

The **Mitchel Lecture Series** will feature Sara Forsdyke, Josiah Ober Collegiate Professor of Ancient History at the University of Michigan. The series is presented by the Department of History and sponsored by the Kinder Institute on Constitutional Democracy. Each of these events is open to the public.

### April 23—Women and Slavery in Ancient Greece 6-7 p.m. in Leadership Auditorium in the Student Union.

The voices and lives of women in ancient Greece are often hard to grasp due to lack of sources. One exception to this generalization is a large and rich body of texts known as the Delphic manumission inscriptions. This lecture will examine what we can learn about these enslaved women from these inscriptions, and will show that enslaved women often negotiated skillfully with their enslavers to secure not only their own freedom and that of family members but also an array of other rights including legal recognition of their ownership property.

### Seminar Series: Democratic Justice: Juries and Democracy in Ancient Greece and Contemporary America

It is seldom acknowledged that at the same time as the Greeks created the world's first democracy, they also invented trial by jury of peers. This seminar series will explore the close relationship between democracy and the jury trial in ancient Greece and will argue that juries are essential to democracies. Dr. Forsdyke will suggest that these points have bearing on current debates about criminal justice and democratic engagement in America today. Seminars in this series include the following:

- Democratic Origins: Juries and Democracy  
April 2, 4-5 p.m. in 001 Switzler Hall
- Jury Size, Random Selection, and Diversity  
April 25, 4-5 pm in 101 Switzler Hall
- Democracy, Juries, and the Rule of Law  
April 26, 3:30 pm in 410 Jesse Hall



## Don't Miss the Informative Bi-weekly MURA Update Emails!

Please provide any email address updates to **Barb Harris**, MURA Communication chair, at [harrisb@umsystem.edu](mailto:harrisb@umsystem.edu).

## AROHE Travel Institute

The **MURA Board** voted on April 17 for MURA to join the Midwest AROHE Travel group. This will allow interested MURA members to join groups of retirees from institutions of higher education in travel designed for those members through Road Scholar. The AROHE Travel Institute forms a community of university members of retiree organizations who have similar interests and want to travel together. Trips will be group trips, which means only members will attend—not the general public. Each group trip will have its own guides and driver who will be with the group for the entire trip. Guides are familiar with the region visited, live in the area, and are trained to help with any problems that may arise. There is no cost for MURA to join and there is no obligation for our members to join in any travel program. Upcoming trips include The Best of Portugal: From the Age of Discovery to Today (November 1-10). MURA members will receive more information in an upcoming email. If you have any questions at this point, please contact Kenneth Dean at [deank@Missouri.edu](mailto:deank@Missouri.edu).

## MU Parking Policies

MU is considering a new parking model that would impact all those who park on campus. To provide a clearer understanding of these potential changes and an opportunity for discussion, all faculty and staff are invited to participate in one of the following virtual information sessions:

- Tuesday, April 23, from 3 to 3:45 p.m. [via Zoom](#)
- Wednesday, April 24 from 10 to 10:45 a.m. [via Zoom](#)
- Thursday, April 25 from 10 to 10:45 a.m. [via Zoom](#)

Each session will include an overview of the issues driving a new parking model, the proposed changes, the reasons behind them, and an opportunity for discussion, questions, and feedback.

MURA's Faculty Council representative, Frank Schmidt, reports that discussion at a recent Faculty Council meeting revealed that the proposed model would involve multiple "tiers" at different prices depending on location. Asked at this meeting about the current policy of allowing retirees to purchase "generic" parking passes, Sarah Chinniah stated that this policy would continue, although there was no discussion as to the cost of these passes.

## Upcoming Events

Month	Speaker/Program	Location	Time
April 23	End-of-Life Planning Seminar Light refreshments will be served. A \$10 donation to the Scholarship Fund is suggested.	Boone Electric Coop 1413 Rangeline St.	10:00-11:30 a.m.
May 7	Greg Bier, Kelly Mattas, and Students Griggs Innovation Nexus: Creating the Next Generation of Mizzou's Student-Innovators	CCMO	8:00-9:30 a.m.
May 30	UM Four-Campus Retiree Leadership Meeting	General Services Building	10:00 a.m.-2:00 p.m.
June 5	Carol Davit, Executive Director of the Missouri Prairie Foundation Why Prairie Matters: New Relevancies of a Vanishing Landscape	CCMO	8:00-9:30 a.m.
<b>Enjoy Your Summer! See You in September!</b>			



### **MU Retirees Association**

University of Missouri  
PO Box 1831  
Columbia, MO 65205-1831

### **Find MURA on Facebook!**



Search for MURA.  
Select "MU Retirees Association-MURA."

Give us a thumbs up!